



# Beclin-1 Polyclonal Antibody

|                           |                                                                                                                                                                                                                                                                                                                                                                                                                                                                                                                                                                               |
|---------------------------|-------------------------------------------------------------------------------------------------------------------------------------------------------------------------------------------------------------------------------------------------------------------------------------------------------------------------------------------------------------------------------------------------------------------------------------------------------------------------------------------------------------------------------------------------------------------------------|
| <b>Catalog No</b>         | YP-Ab-00587                                                                                                                                                                                                                                                                                                                                                                                                                                                                                                                                                                   |
| <b>Isotype</b>            | IgG                                                                                                                                                                                                                                                                                                                                                                                                                                                                                                                                                                           |
| <b>Reactivity</b>         | Human;Mouse;Chicken                                                                                                                                                                                                                                                                                                                                                                                                                                                                                                                                                           |
| <b>Applications</b>       | WB;ELISA                                                                                                                                                                                                                                                                                                                                                                                                                                                                                                                                                                      |
| <b>Gene Name</b>          | BECN1 GT197                                                                                                                                                                                                                                                                                                                                                                                                                                                                                                                                                                   |
| <b>Protein Name</b>       | Beclin-1                                                                                                                                                                                                                                                                                                                                                                                                                                                                                                                                                                      |
| <b>Immunogen</b>          | Synthesized peptide derived from Beclin-1 . at AA range: 110-190                                                                                                                                                                                                                                                                                                                                                                                                                                                                                                              |
| <b>Specificity</b>        | Beclin-1 Polyclonal Antibody detects endogenous levels of Beclin-1                                                                                                                                                                                                                                                                                                                                                                                                                                                                                                            |
| <b>Formulation</b>        | Liquid in PBS containing 50% glycerol, 0.5% BSA and 0.02% sodium azide.                                                                                                                                                                                                                                                                                                                                                                                                                                                                                                       |
| <b>Source</b>             | Polyclonal, Rabbit,IgG                                                                                                                                                                                                                                                                                                                                                                                                                                                                                                                                                        |
| <b>Purification</b>       | The antibody was affinity-purified from rabbit antiserum by affinity-chromatography using epitope-specific immunogen.                                                                                                                                                                                                                                                                                                                                                                                                                                                         |
| <b>Dilution</b>           | WB 1:500-2000, ELISA 1:10000-20000                                                                                                                                                                                                                                                                                                                                                                                                                                                                                                                                            |
| <b>Concentration</b>      | 1 mg/ml                                                                                                                                                                                                                                                                                                                                                                                                                                                                                                                                                                       |
| <b>Purity</b>             | ≥90%                                                                                                                                                                                                                                                                                                                                                                                                                                                                                                                                                                          |
| <b>Storage Stability</b>  | -20°C/1 year                                                                                                                                                                                                                                                                                                                                                                                                                                                                                                                                                                  |
| <b>Synonyms</b>           | beclin 1, autophagy related                                                                                                                                                                                                                                                                                                                                                                                                                                                                                                                                                   |
| <b>Observed Band</b>      | 55kD                                                                                                                                                                                                                                                                                                                                                                                                                                                                                                                                                                          |
| <b>Cell Pathway</b>       | Cytoplasm . Golgi apparatus, trans-Golgi network membrane ; Peripheral membrane protein . Endosome membrane ; Peripheral membrane protein . Endoplasmic reticulum membrane ; Peripheral membrane protein . Mitochondrion membrane ; Peripheral membrane protein . Endosome . Cytoplasmic vesicle, autophagosome . Interaction with ATG14 promotes translocation to autophagosomes. Expressed in dendrites and cell bodies of cerebellar Purkinje cells (By similarity). . ; [Beclin-1-C 35 kDa]: Mitochondrion . Nucleus . Cytoplasm . ; [Beclin-1-C 37 kDa]: Mitochondrion . |
| <b>Tissue Specificity</b> | Ubiquitous.                                                                                                                                                                                                                                                                                                                                                                                                                                                                                                                                                                   |
| <b>Function</b>           | function:Plays a central role in autophagy (By similarity). May play a role in antiviral host defense. Protects against infection by a neurovirulent strain of Sindbis virus.,similarity:Belongs to the beclin family.,subcellular location:Expressed in dendrites and cell bodies of cerebellar Purkinje cells.,subunit:Interacts with GOPC and GRID2. Interacts with AMBRA1. Probably forms a complex with AMBRA1 and PIK3C3 (By similarity). Interacts with BCL2 and BCL2L1.,tissue specificity:Ubiquitous.,                                                               |
| <b>Background</b>         | beclin 1(BECN1) Homo sapiens This gene encodes a protein that regulates autophagy, a catabolic process of degradation induced by starvation. The                                                                                                                                                                                                                                                                                                                                                                                                                              |



encoded protein is a component of the phosphatidylinositol-3-kinase (PI3K) complex which mediates vesicle-trafficking processes. This protein is thought to play a role in multiple cellular processes, including tumorigenesis, neurodegeneration and apoptosis. Alternative splicing results in multiple transcript variants. [provided by RefSeq, Sep 2015],

**matters needing attention**

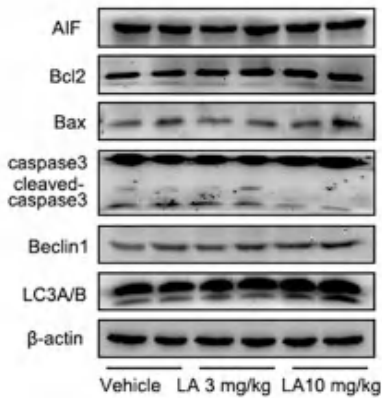
Avoid repeated freezing and thawing!

**Usage suggestions**

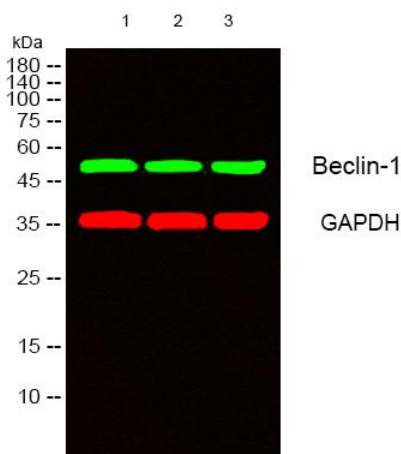
This product can be used in immunological reaction related experiments. For more information, please consult technical personnel.

**Products Images**

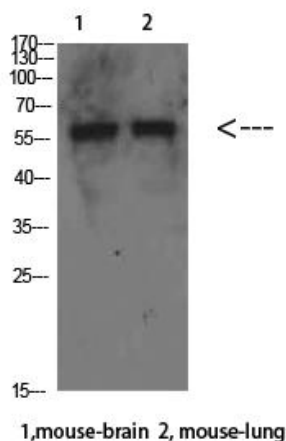
E



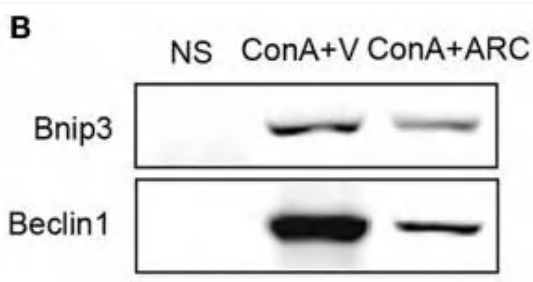
Zhang, Yan-Hui, et al. " $\alpha$ -Lipoic acid improves abnormal behavior by mitigation of oxidative stress, inflammation, ferroptosis, and tauopathy in P301S Tau transgenic mice." Redox biology 14 (2018): 535-548.



Western blot analysis of lysates from 1) mouse-brain, 2) mouse-lung, 3) Hela cells, (Green) primary antibody was diluted at 1:1000, 4° over night, secondary antibody(cat:RS23920)was diluted at 1:10000, 37° 1hour. (Red) GAPDH Monoclonal Antibody(2B8) (cat:YM3029) antibody was diluted at 1:5000 as loading control, 4° over night,secondary antibody(cat:RS23710)was diluted at 1:10000, 37° 1hour.



Western Blot analysis of mouse-brain mouse-lung cells using Beclin-1 Polyclonal Antibody diluted at 1:500. Secondary antibody(catalog#:RS0002) was diluted at 1:20000



Feng, Qin. "Quantitative proteomic analysis reveals that Arctigenin alleviates concanavalin A-induced hepatitis through suppressing immune system and regulating autophagy." *Frontiers in immunology* 9 (2018): 1881.